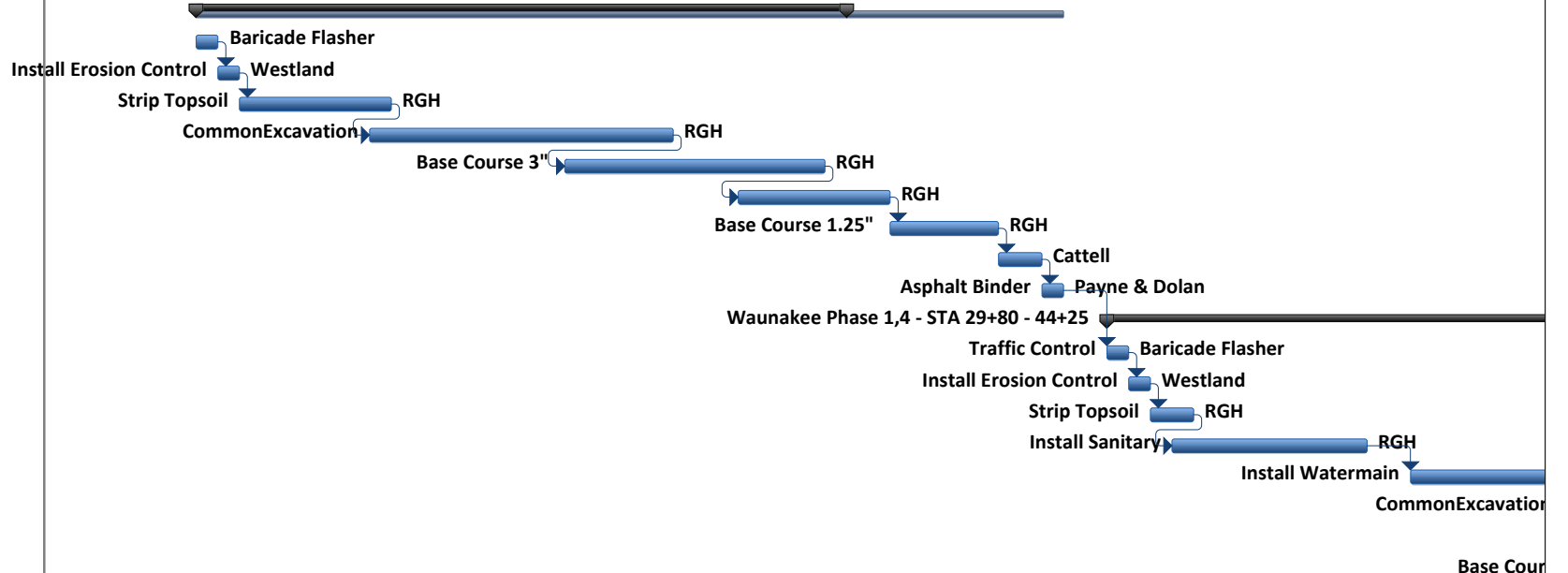
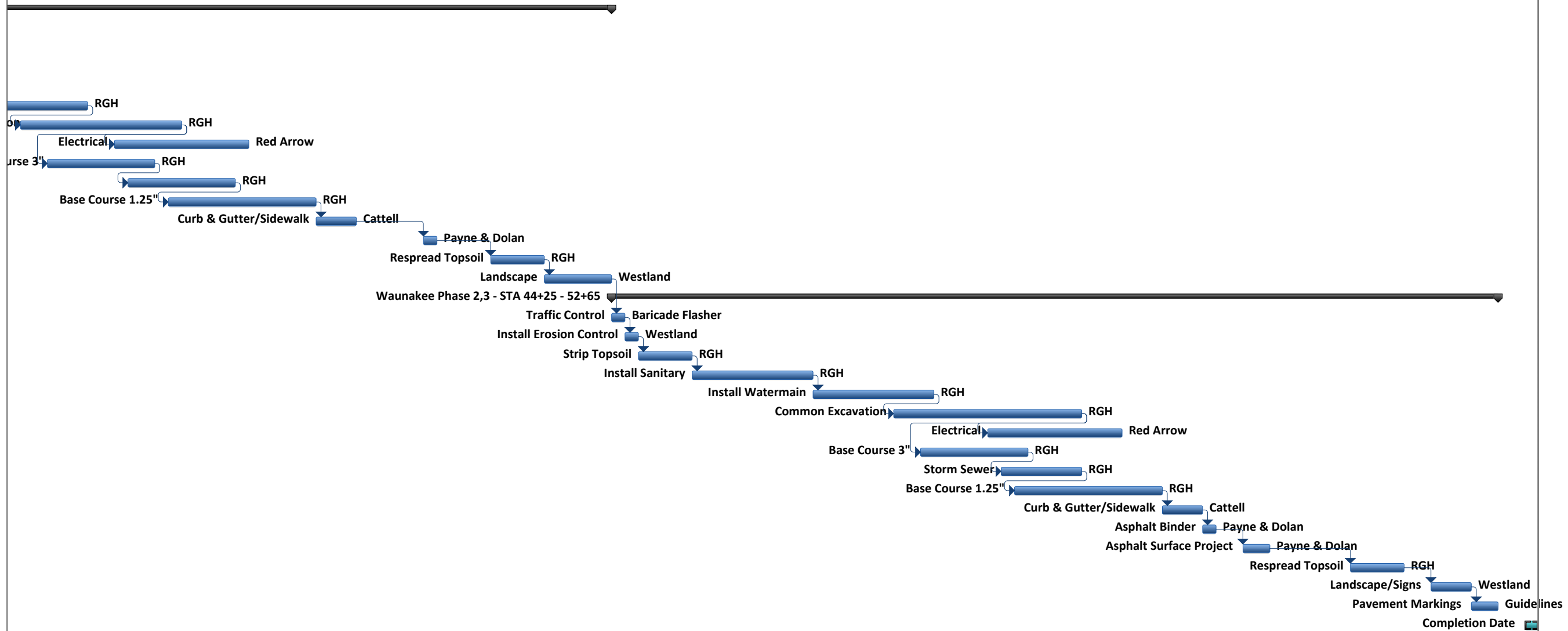


ID	Task Name	Duration	Start	Finish	April				May				June					
					3/26	4/2	4/9	4/16	4/23	4/30	5/7	5/14	5/21	5/28	6/4	6/11	6/18	
1	Waunakee Phase 5 - STA 4+00 - 29+80	22 days	Mon 4/24/17	Tue 5/23/17														
2	Traffic Control Detour Route	1 day	Mon 4/24/17	Mon 4/24/17														
3	Install Erosion Control	1 day	Tue 4/25/17	Tue 4/25/17														
4	Strip Topsoil	5 days	Wed 4/26/17	Tue 5/2/17														
5	CommonExcavation	10 days	Tue 5/2/17	Mon 5/15/17														
6	Base Course 3"	8 days	Thu 5/11/17	Mon 5/22/17														
7	Storm Sewer	5 days	Fri 5/19/17	Thu 5/25/17														
8	Base Course 1.25"	3 days	Fri 5/26/17	Tue 5/30/17														
9	Curb & Gutter/Sidewalk	2 days	Wed 5/31/17	Thu 6/1/17														
10	Asphalt Binder	1 day	Fri 6/2/17	Fri 6/2/17														
11	Waunakee Phase 1,4 - STA 29+80 - 44+25	47 days	Mon 6/5/17	Tue 8/8/17														
12	Traffic Control	1 day	Mon 6/5/17	Mon 6/5/17														
13	Install Erosion Control	1 day	Tue 6/6/17	Tue 6/6/17														
14	Strip Topsoil	2 days	Wed 6/7/17	Thu 6/8/17														
15	Install Sanitary	7 days	Thu 6/8/17	Fri 6/16/17														
16	Install Watermain	10 days	Mon 6/19/17	Fri 6/30/17														
17	CommonExcavation	10 days	Mon 6/26/17	Fri 7/7/17														
18	Electrical	8 days	Mon 7/3/17	Wed 7/12/17														
19	Base Course 3"	6 days	Wed 6/28/17	Wed 7/5/17														
20	Storm Sewer	6 days	Tue 7/4/17	Tue 7/11/17														
21	Base Course 1.25"	7 days	Fri 7/7/17	Mon 7/17/17														
22	Curb & Gutter/Sidewalk	3 days	Tue 7/18/17	Thu 7/20/17														
23	Asphalt Binder	1 day	Wed 7/26/17	Wed 7/26/17														
24	Respread Topsoil	4 days	Mon 7/31/17	Thu 8/3/17														
25	Landscape	3 days	Fri 8/4/17	Tue 8/8/17														
26	Waunakee Phase 2,3 - STA 44+25 - 52+65	48 days	Wed 8/9/17	Fri 10/13/17														
27	Traffic Control	1 day	Wed 8/9/17	Wed 8/9/17														
28	Install Erosion Control	1 day	Thu 8/10/17	Thu 8/10/17														
29	Strip Topsoil	2 days	Fri 8/11/17	Mon 8/14/17														
30	Install Sanitary	7 days	Tue 8/15/17	Wed 8/23/17														
31	Install Watermain	7 days	Thu 8/24/17	Fri 9/1/17														
32	Common Excavation	10 days	Wed 8/30/17	Tue 9/12/17														
33	Electrical	8 days	Wed 9/6/17	Fri 9/15/17														
34	Base Course 3"	6 days	Fri 9/1/17	Fri 9/8/17														
35	Storm Sewer	4 days	Thu 9/7/17	Tue 9/12/17														
36	Base Course 1.25"	7 days	Fri 9/8/17	Mon 9/18/17														
37	Curb & Gutter/Sidewalk	3 days	Tue 9/19/17	Thu 9/21/17														
38	Asphalt Binder	1 day	Fri 9/22/17	Fri 9/22/17														
39	Asphalt Surface Project	2 days	Mon 9/25/17	Tue 9/26/17														
40	Respread Topsoil	4 days	Tue 10/3/17	Fri 10/6/17														
41	Landscape/Signs	3 days	Mon 10/9/17	Wed 10/11/17														
42	Pavement Markings	2 days	Thu 10/12/17	Fri 10/13/17														
43	Completion Date	1 day	Mon 10/16/17	Mon 10/16/17														



Project: Initial Schedule Century A Date: Mon 4/3/17	Task		Summary		External Milestone		Inactive Summary		Manual Summary Rollup		Finish-only	
	Split		Project Summary		Inactive Task		Manual Task		Manual Summary		Deadline	
	Milestone		External Tasks		Inactive Milestone		Duration-only		Start-only		Progress	



Project: Initial Schedule Century A
Date: Mon 4/3/17

Task		Summary		External Milestone		Inactive Summary		Manual Summary Rollup		Finish-only	
Split		Project Summary		Inactive Task		Manual Task		Manual Summary		Deadline	
Milestone		External Tasks		Inactive Milestone		Duration-only		Start-only		Progress	